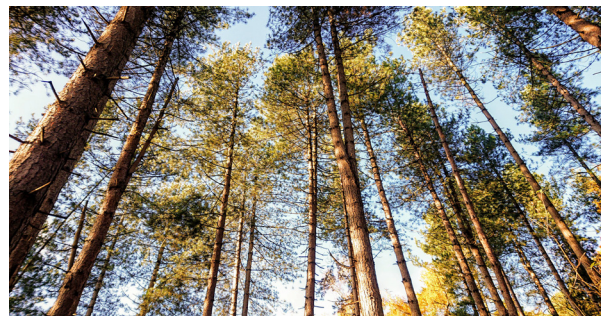


Dunsmore Living Landscape area

Warwickshire Wildlife Trust
 Brandon Marsh Nature Centre
 Brandon Lane
 Coventry
 CV3 3GW

024 7630 2912
 enquiries@wkwtr.org.uk

© 2021 Warwickshire Wildlife Trust



© Dan Loveard

About Dunsmore

The Dunsmore Living Landscape scheme is a Warwickshire Wildlife Trust led project working to restore this important ancient landscape to one rich in wildlife accessible to all in the areas lying between east Coventry, Rugby and north Leamington. With the generous support of the National Lottery Heritage Fund, the project is focusing on a landscape-scale level of action for wildlife in the area, allowing us to restore ancient woodland, historic hedgerows, ponds and flower rich grassland, creating habitat for iconic wildlife such as the hazel dormouse and purple emperor butterfly.

By working with local partners, landowners and communities we are improving these habitats, helping to conserve historic sites and improve access, interpretation and general information about the area. We are also providing learning and training opportunities and running a range of events and activities, designed to reconnect people with their local living landscape, green spaces and heritage sites.

This leaflet has been created to provide you with some information about the local area and provide you with an opportunity to get up close to nature and explore.

Wildlife spotting



The Warwickshire countryside is filled with an abundance of beautiful plants, birds, animals and bugs all year round – particularly in the spring and summer.

Can you help Harry the Hedgehog find these lovely things?



© Jay Warren

Bluebell



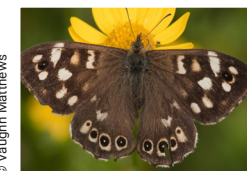
© Kathleen Everitt

Great-spotted Woodpecker



© Wildnet

Grey Squirrel



© Vaughn Matthews

Speckled Wood butterfly



© Gemma de Gouveia

Oak leaf



Dunsmore Living Landscape

Brandon Wood

A guide for parents of children with autism



warwickshirewildlifetrust.org.uk
 exploredunsmore.org



Welcome to Brandon Wood

...wonderful woodland for gentle walks...

This is a beautiful community owned woodland on the edge of Binley Woods, with plenty of wildlife to spot. There are lots of paths to explore including an all ability path with a number of benches along it. Children may enjoy looking out for the ones with wildlife carved on them.

Although popular with local residents, the wood is large enough at over 62 hectares to never feel busy. It is used by dog walkers so may be less favoured by children who are afraid of dogs.

The main entrance is at the Ferndale Road/ Craven Avenue corner and this connects you straight to both the circular all ability path route (about 580m) and the main surfaced route which takes you through the wood out to Brandon Reach and Brandon Lane on the far south west corner. There is no car park here, only street parking and it is important not to park right on the corner otherwise the buses cannot get round.

The wood can also be accessed from other points including the playing fields on Craven Avenue and two from the Brandon Reach Nature Reserve on the western edge. There is limited parking available at the entrance to Brandon Marsh Nature Centre, or you can park in the main car park here and walk up the driveway to the Brandon Reach entrance on Brandon Lane.

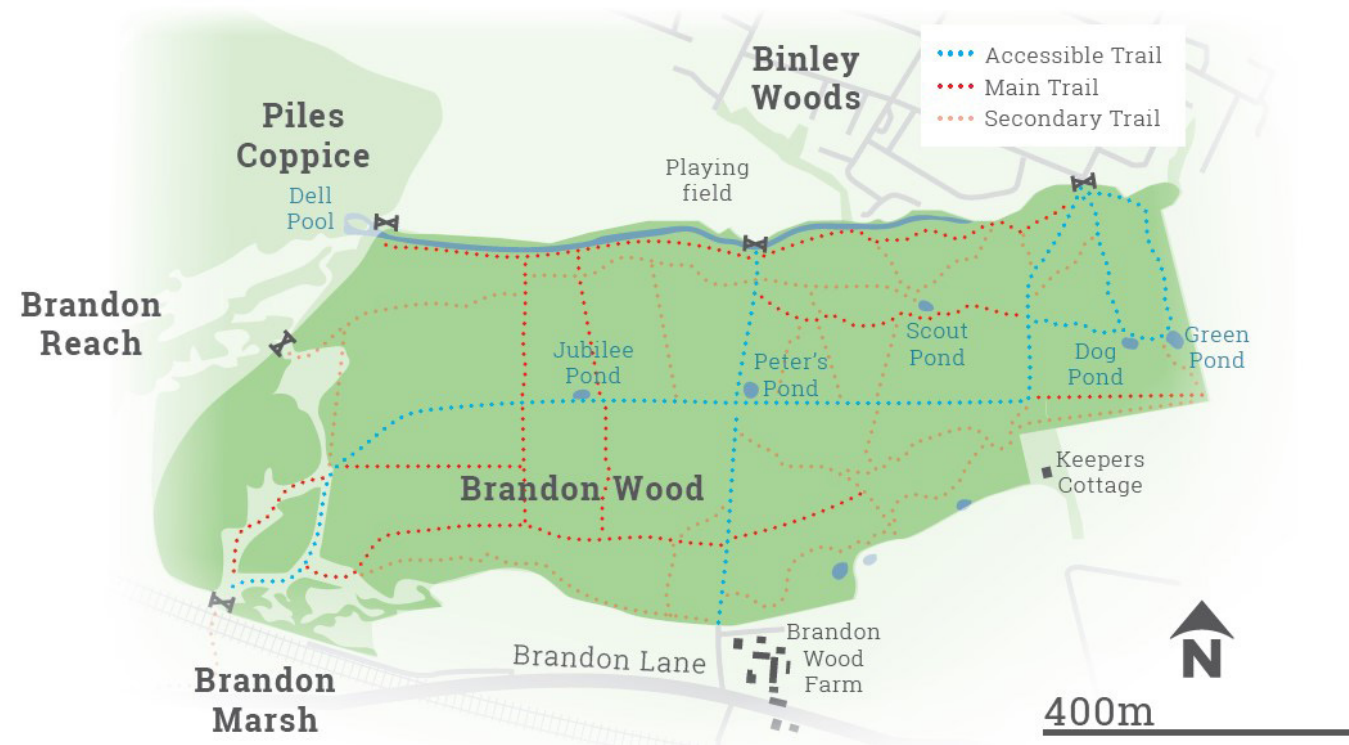
Please take care when crossing the road as cars tend to go by fast here. Then cross over the railway bridge and the entrance into Brandon Wood is in front of you.

The wood is full of animal life. Squirrels can be spotted amongst the trees. In the summer dragonflies patrol the path verges and there are plenty of butterflies to spot. There are a number of ponds around the wood. They are not fenced however vegetation does provide a natural barrier around much of their edges. In spring, tadpoles can be seen in the smaller Jubilee Pond on the main central ride and if you're lucky, great crested newts too.

There are many birds including woodpeckers and ravens, whilst ducks and moorhens can be found on the larger ponds.

For children who like flowers, there are plenty throughout spring and summer, including lots of lesser celandine and primroses, wood anemone, bluebells, foxgloves and orchids.

The Friends of Brandon Wood, who own the wood, have an active regular volunteer group who look after it, so you may see them out and about working away. Some children may find it interesting to find out what it is they're doing to look after the wood and the wildlife in it.



Info:

Main entrance off Craven Avenue/Ferndale Road with street parking. what3words: scrapped.rider.limbs, postcode: CV3 2JS Grid ref: SP399770

Second entrance from Brandon Reach Nature Reserve, off Brandon Lane. Parking at Brandon Marsh Nature Reserve CV3 3GW. Brandon Wood entrance locators - what3words weedy.clip.slap, Grid ref. SP386763

The woodland is open 24hrs a day, seven days a week. Admission free

No facilities, but the Brandon Marsh Visitor Centre with café and toilets is nearby – check website for opening times: www.warwickshirewildlifetrust.org.uk/BrandonMarsh

Terrain: Path network is generally flat. Main routes are well surfaced and suitable for buggies and wheelchairs but smaller paths are narrower and may get muddy during wet weather.

Ponds: a number of unfenced ponds with some accessible edges

Dogs: present and likely to be off the lead.

